

आरंभ नव्या पर्वचा...!

SHUBHARAMBH

A P A R T M E N T



1 & 2 BHK

Premium Homes @ Wakad





Aarambh Navya Parvatha
SHUBHARAMBH
APARTMENT

The question that everyone has is....

Self-pleasure: A house full of prosperity, a house in which you can feel the moisture of maya. **Vyateshwara Ventures** is here to make this dream come true. The new project "**Shubharambh Apartment**" where Happiness : The Beginning of Prosperity, is a beautiful, robust, loving and luxurious building, right here near you.





SPECIFICATIONS

RCC FRAME STRUCTURE

- * Superior Quality RCC structure for earthquake safety.

MASONRY

- * 6" thick internal and external wall of red bricks
- * Internal sand finish plaster with gypsum finish

DOORS

- * Attractive both side laminated main door with door quality door fittings.
- * Wooden door frames with flush doors for bedrooms.
- * Granite door frame for toilet with flush door.

WINDOWS

- * Large windows for better air circulation.
- * Powder coated 3 track aluminum sliding windows.
- * MS Grills for safety and security

BATHROOM

- * Anti Skid ceramic floorings.
- * Jaguar, Hindware or equivalent sanitary ware.
- * Concealed plumbing with premium quality CP fittings.
- * Provision for Geyser & exhaust fan.
- * Solar Water heater connection.

LIVING

- * Designer POP False ceiling with LED lights.
- * Attractive and elegant Chandelier.

FLOORINGS

- * Anti Skid ceramic floor tiles in bathroom and terrace area.
- * 2x2 branded vitried tiles.

KITCHEN

- * Marble / Granite Top kitchen platform with kadapa for providing strong support to the platform.
- * Stainless steel sink.
- * Glazed dado tiles above platform up to lintel level.
- * Provision for water purifier and exhaust fan.

ELECTRICAL

- * Concealed copper wiring in the entire flat.
- * AC points in bedrooms (Jaquar, Hindware, Somany Or Equivalent)
- * Provision for inverter
- * Premium modular switches
- * TV and telephone points in the living room.

PAINTS

- * Internal oil bound distemper paint in the entire house
- * Semi acrylic paint for external walls

OTHER OFFERINGS

- * Letter Box for each flat
- * Video door phone for each flat.
- * Designer Name Plate for each flat.



Your Proximity

Located Close the famed School, colleges, Mall, IT hub - Hinjewadi, Pimple Saudagar is an immediate extension of one of the most adored localities in Pune - Apart from being situated in one of the fastest Growing vicinities in pune, Aureate is comfortably close to many upbeat areas like PCMC



AMENITIES



**Auto Door
Branded Lift**



**Video Door Phone
For All Flats**



**Solar Water Heater
For All Bathrooms**



**CCTV Surveillance
For Safety**



**Attractive Chandelier
And False Ceiling For
Living Rooms**



**Attractive False Ceiling
Design For Balcony**



Rain Water Harvesting



Gas Pipeline Provision



AC Point in Bedroom



1 BHK

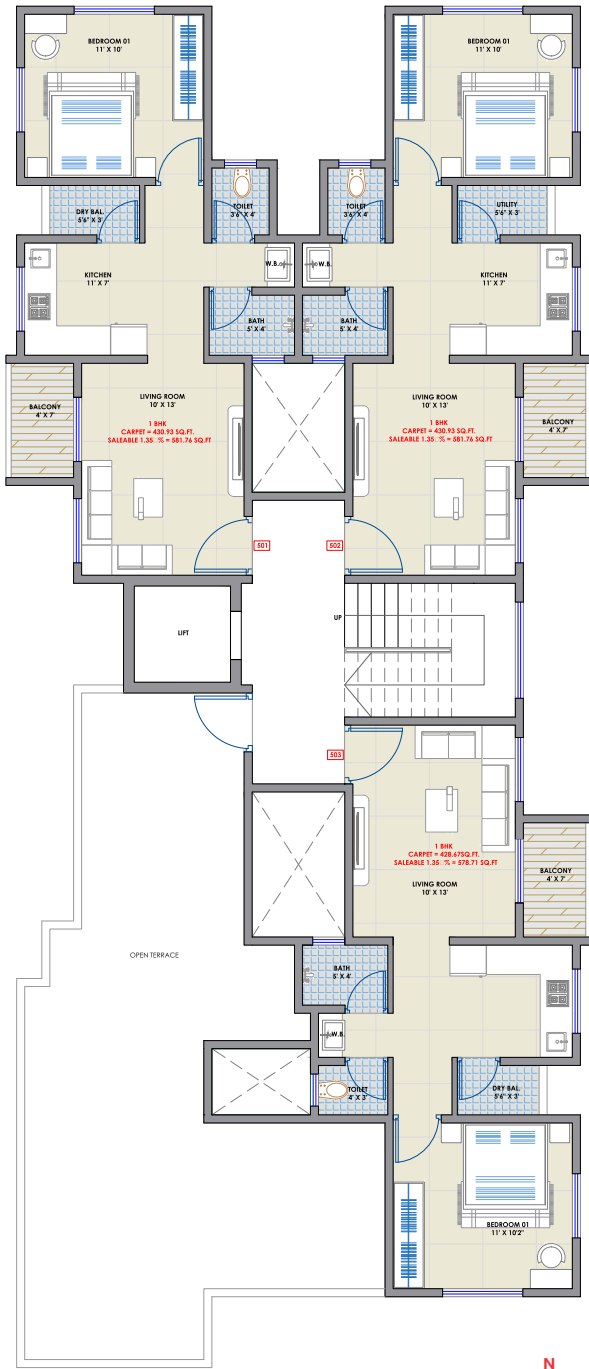
Cut Section



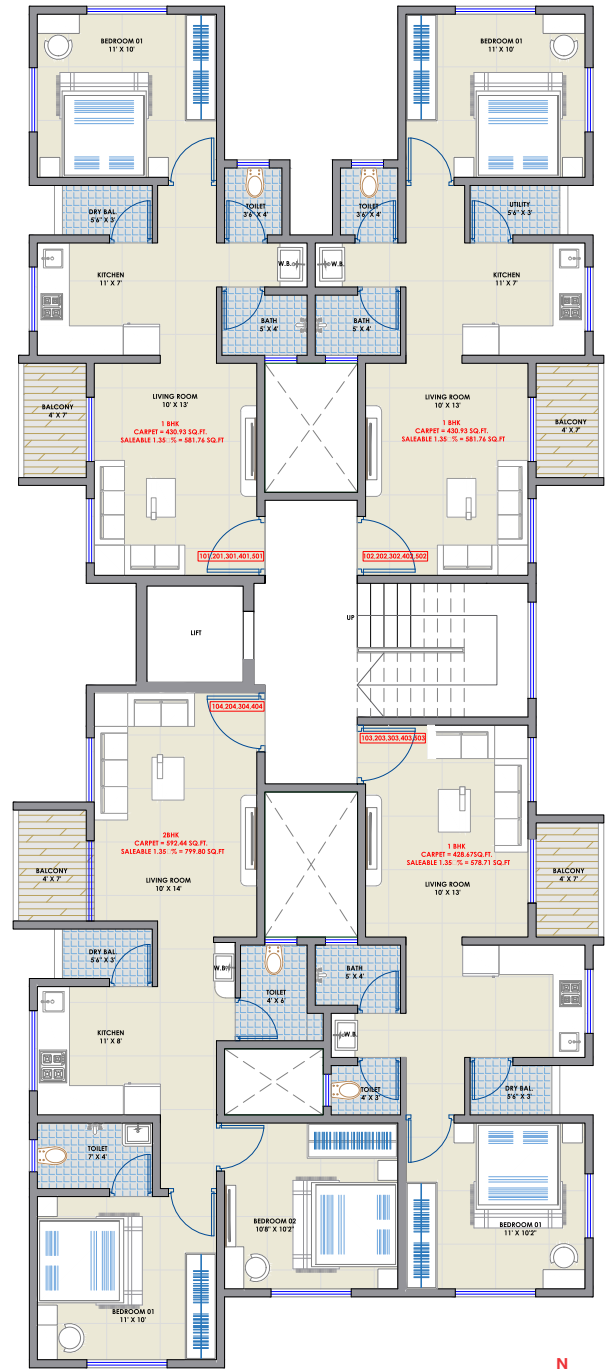
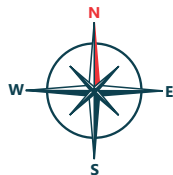
2 BHK

Cut Section

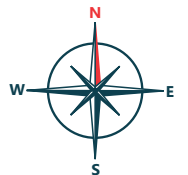




FLOOR PLAN 5th



FLOOR PLAN 1- 4th





Find us...



Distance From Location...			
📍 hinjewadi it park-	6.0kms	📍 Indira college-	1.3 kms
📍 Shivajinagar Bus stand-	16 kms	📍 Jspm school-	2.0 kms
📍 Metro Station-	3.0kms	📍 Akshara international school-	500.0 m
📍 Phoenix mall wakad-	2.8 Kms	📍 Vibgyor school-	2.0 kms
📍 D mart hinjewadi-	4.0 kms	📍 Pune railway station-	20 kms
📍 Decathlon wakad-	1.5 kms	📍 Lohegaon airport-	25 kms

A Project By

VYANKATESHWARA VENTURES



Sr. No.108, Near Indira National School, Wakad,Pune



+91 91750 00504